

# Cummins South Pacific Service Bulletin



## Service Bulletin Number: CSP SB 20-20

### Subject: New Diesel Particulate Filter Pressure Differential Sensor

**Product Affected:** X15e6 CM2350

**Release Date:** 22/12/2020

### **Description:**

The purpose of this Service Bulletin is to inform all Cummins South Pacific and Dealer service locations of the new pressure differential (dP) sensor release for X15e6 Single Module Aftertreatment systems.

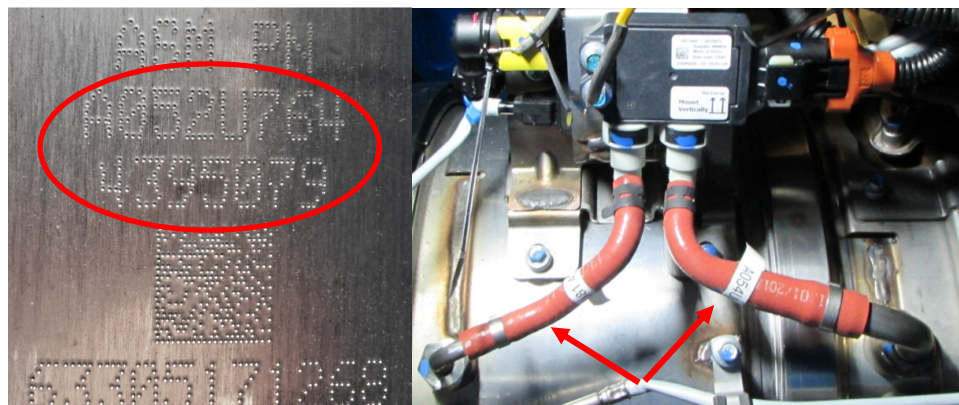
If the old differential pressure sensor (part number 2871960) is diagnosed to be failed, the replacement new sensor (part number 5492073) should be installed.

New sensor part number 5492073 has larger diameter tubes to reduce condensation build up and as such also requires the installation of larger diameter tubes.

Refer to table 1 below as to which differential pressure sensor tube part number should be ordered against the specific Single Module Aftertreatment (SMA) assembly part number. The SMA assembly part number can be found on the DEF mixer (decomposition) section.

*Table 1: dP Sensor Tubes v SMA Assembly Part Number*

Single Module Aftertreatment Assembly Part Number		New dP Sensor Tubes Part Number	
CES PN	Cummins PN	CES PN	Cummins PN
A052Z403	4394830	A059E911	5418427
		A059E913	5418428
A052U764	4395079	A059E909	5418430
		A059E907	5418415
A055B010 A054U777	4394539	A059E903	5418414
	4394387	A059E905	5418425



# Cummins South Pacific

## *Service Bulletin*



### **Actions:**

1. Follow QSOL procedures for dP sensor replacement.
2. No TSR is required if old dP sensor (part number 2871960) was found to be failed.
3. Read and understand all SWP listed for South Pacific OHS&E.
4. Ensure all parts and service staff involved in supporting this product are fully aware of the above-mentioned actions.
5. The information in this document has no effect on present warranty coverage or repair practices, nor does it authorize TRP or Campaign actions.

**Technical Assistance:** Please contact your local Cummins Branch, DFSE or 1300Cummins for technical assistance.