

Parts Professional 68

Parts Finding



68

PARTS PROFESSIONAL

Parts Finding

INTRODUCTION

Parts Finding is critical to the success of Cummins' aftermarket business. Getting the correct parts in the hands of the customer in a timely and efficient manner is absolutely vital. The parts professional employee is responsible for this important task, and this training is designed to help improve this necessary skill.

After this training, you will be able to:

- Utilize key parts finding tools within QuickServe® Online
- Follow the proper steps to find parts
- Avoid common mistakes in parts finding



68

PARTS PROFESSIONAL

Parts Finding

WHY ARE WE DOING THIS?

Have you ever experienced a time when you were searching for a part and tried everything you knew to find it and still couldn't locate that part all the while a customer is waiting on the line or in the shop? Time keeps ticking away as you search still finding no results.

Following the **proper steps** and avoiding common mistakes in parts finding can decrease these instances and create an excellent atmosphere in **customer service**. Let's take a look at how to do this.



68

PARTS PROFESSIONAL

Parts Finding

WHY ARE WE DOING THIS?

The logo for QuickServe Online features the word "QuickServe" in a bold, italicized, black sans-serif font. To the left of the text are three horizontal red brushstrokes that sweep from left to right, ending in a small wrench icon. Below "QuickServe" is the word "Online" in a bold, black sans-serif font.

The steps to **finding parts** on **QuickServe Online** are simple. However, common mistakes in this process can waste time and money. We will now go through each step of the process. You will learn how to avoid mistakes that can occur in those steps and be introduced to tools to improve your efficiency and accuracy in parts finding.



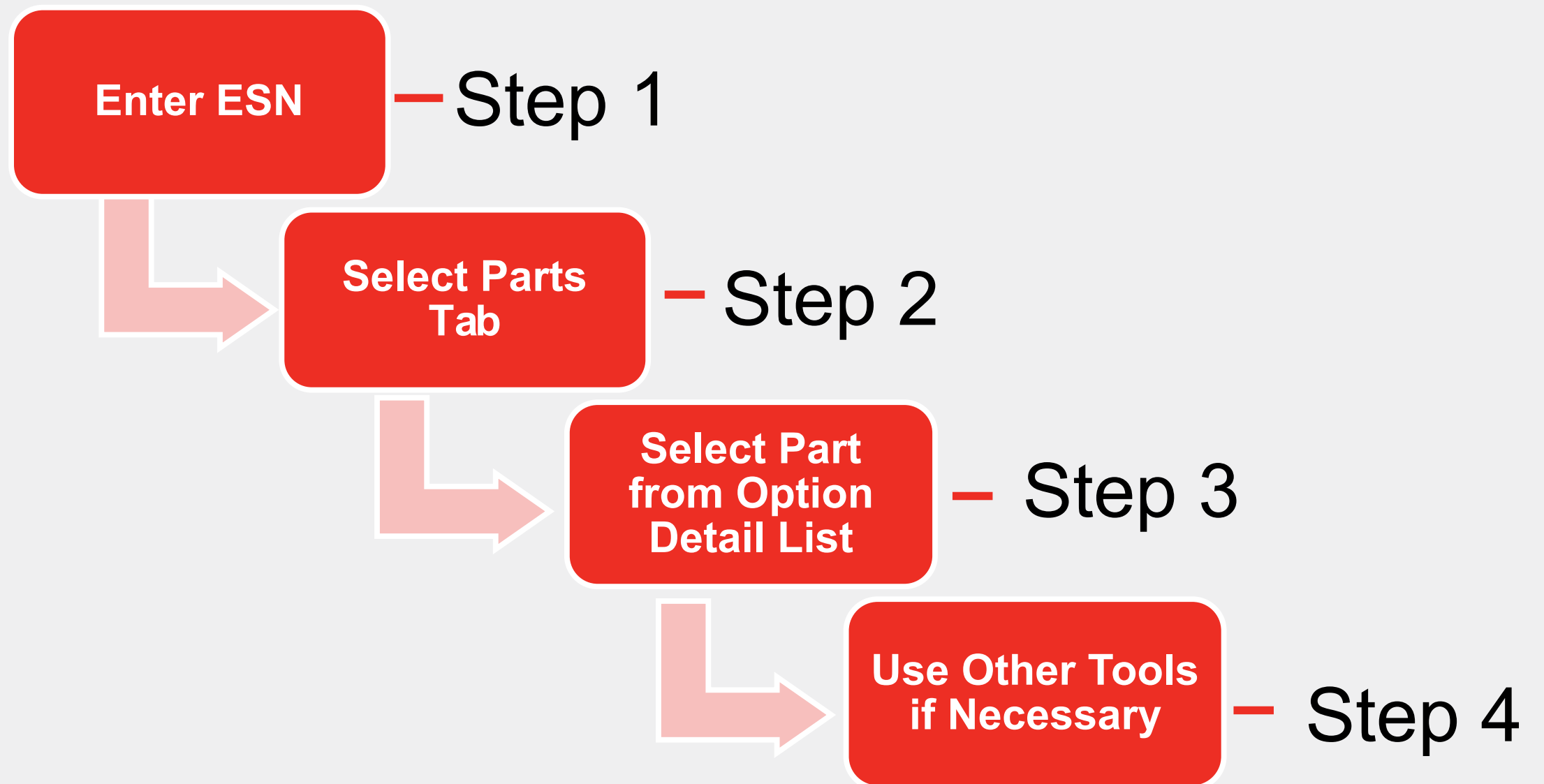
68

PARTS PROFESSIONAL

Parts Finding

STEPS TO FINDING PARTS

Select each step below to get more information on “Finding Parts” Steps



Click through all steps to continue to the next slide



68

PARTS PROFESSIONAL

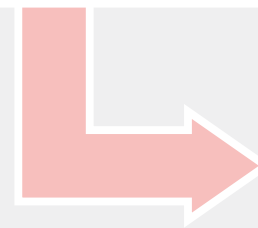
Parts Finding



STEPS TO FINDING

Select each step

Enter ESN



The screenshot shows the Cummins Parts website interface. At the top is the Cummins logo. Below it is a red navigation bar with the word "Parts". Underneath is a black bar with a white square icon and the text "Engine Content". The main content area has a red background with a yellow border. It contains the text "Content For Engine Serial Number (ESN):" followed by a search box containing the number "79393426" and a search button with a right-pointing arrow. Below the search box are five links: "How do I locate my ESN?", "Engine Model Search", "Part Number Supersessions", "VIN To ESN Reference", and "TSB Smart Filter".



Step 1:
Enter an Engine Serial Number (ESN) in the search box; use help links if no ESN is available.



Parts

Engine Content

Content For Engine Serial Number (ESN):

79393426 >

How do I locate my ESN?

Engine Model Search

Part Number Supersessions

VIN To ESN Reference

TSB Smart Filter

Engine Parts Information (79512345 - ISX15 CM225)

Parts Catalog Dataplate Add Upfit CES Search Campaigns

ReCon Related Information

Option View System View

Search Parts Catalog Print Opt

How To Use The Parts Catalog

Show All entries

| Option | Repair Group | Group Name |
|---------------------------|--------------|----------------|
| AB1024 | 16.04.1 | ACCESSORY SUPP |
| PE1027-07 | 11.01.1 | AFTERTREATMENT |
| AP8121 | 01.06.1 | AGENCY APPROVA |

Step 2: Clicking on the Parts Tab will take you directly to the parts catalog mini-tab containing the system view for the entered ESN.

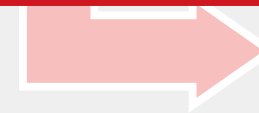
To search by the option, click on the Option View tab.



STEPS TO FINDING PARTS

| Cart | Ref No | Part Number | Part Description |
|---|--------|-------------|------------------|
| <input type="button" value="View My Cart"/> | | | |
| | | CP1183 | Air Compressor |
| <input type="checkbox"/> | 2 | 3679958 | Union, Male |
| <input type="checkbox"/> | | 3682978 | Hose, Flexible |
| <input type="checkbox"/> | 3 | 3102109 | Seal, O Ring |
| <input type="checkbox"/> | 4 | 3103015 | Seal, Grommet |

Step 3: Once you select the option in the parts catalog, it will take you to the Parts Catalog Option Detail Page.



if Necessary

– Step 4

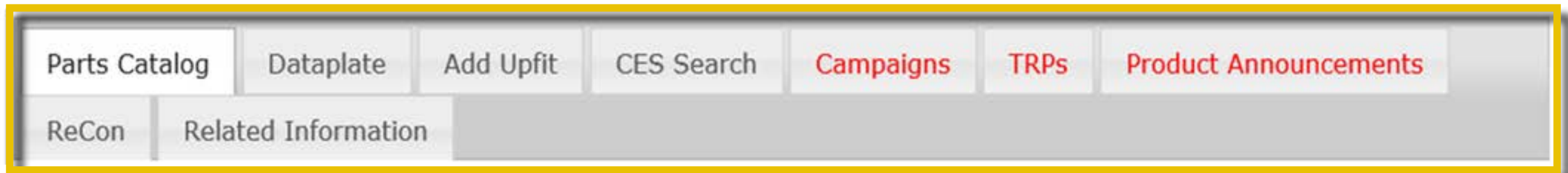
STEPS TO FINDING PARTS

Select each step below to get more information on “Finding Parts” Steps

Enter ESN

— Step 1

Step 4: Use the mini-tabs to navigate to different tools that can be used to assist with parts searching.



Use Other Tools if Necessary

— Step 4



68

PARTS PROFESSIONAL

Parts Finding



COMMON MISTAKES AND TOOLS TO USE



Common Mistake **Not Clearing a Previously Searched ESN**

Always double-check the ESN when conducting a new search to verify that you are not searching with a previously entered ESN. This can lead to selecting parts from the bill of materials for the previously searched ESN.

Note: If you are using Microsoft® Internet Explorer®, check to make sure your browser settings are correct to ensure you are not mistakenly searching for a previously entered ESN. You can adjust your browser settings by following the instructions in the FAQ section under the **“Information”** section in the left hand navigation bar on QuickServe Online, or go to this [link](#).



Enter ESN

— Step 1

Engine Content

Content For Engine Serial Number (ESN):

79393426



How do I locate my ESN?

Engine Model Search

Part Number Supersessions

VIN To ESN Reference

TSB Smart Filter

COMMON MISTAKES AND TOOLS TO USE



Tool for ... Locating the ESN

These tools below will help you with finding an ESN. The first tool instructs you on where to look for an ESN. The second tool is a cross-reference search box where you can enter a VIN number to find a truck's ESN.

Finding the ESN on different engines

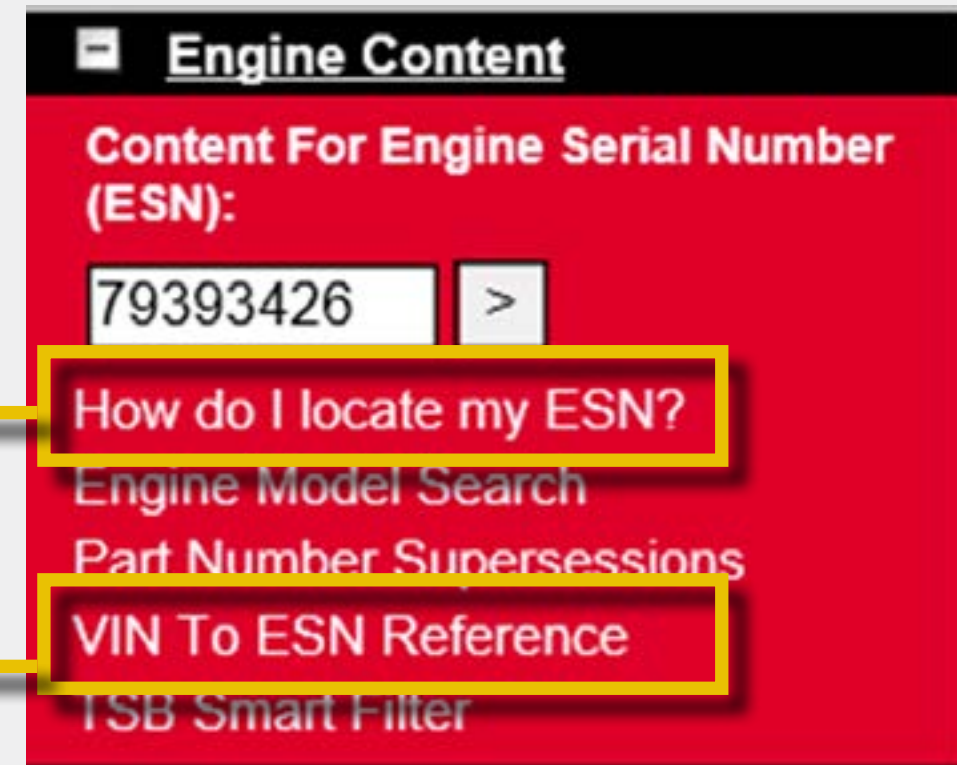
Instructions for finding ESNs of ISM, ISX, ISB, ISC, ISL, QSK45 and QSK60 engines.

VIN to ESN Reference

For automotive engines, this search tool is available. If registered, the ESN can be found by entering the VIN number of the truck.

Enter ESN

— Step 1



| | |
|---|----------------------|
| Vehicle Identification Number | <input type="text"/> |
| Serial Number | <input type="text"/> |
| <input type="button" value="Close"/> <input type="button" value="Clear"/> <input type="button" value="Search"/> | |



68

PARTS PROFESSIONAL

Parts Finding



COMMON MISTAKES AND TOOLS TO USE



**Tool for ...
Parts Catalog Option View
and System View**

To begin your search, you have the choice between the Option View and System View. Click on “Option View” and “System View” at the right to learn about these viewing modes.

Select Parts
Tab

– Step 2

Engine Parts Information (79512345 - ISX15 CM2250)

Parts Catalog | Dataplate | Add Upfit | CES Search | Campaigns | TRPs | Product Annou

ReCon | Related Information

Option View | System View

Search Parts Catalog | Print Option List | Service Man

How To Use The Parts Catalog

Show All entries | Table Filter:

| Option | Repair Group | Group Name |
|-----------|--------------|-----------------------|
| AB1024 | 16.04.1 | ACCESSORY SUPPORT |
| PE1027-07 | 11.01.1 | AFTERTREATMENT DEVICE |
| AP8121 | 01.06.1 | AGENCY APPROVAL |

68

PARTS PROFESSIONAL

Parts Finding

COMMON MISTAKES AND TOOLS TO USE

The screenshot shows the Cummins parts catalog interface. At the top, the title bar reads "Option View" and "Engine Parts Information (79393426 - ISX15 CM2250)". Below this is a navigation menu with tabs for "Parts Catalog", "Dataplate", "Add Upfit", "CES Search", "Campaigns", "TRPs", and "Product Announcements". A secondary menu includes "ReCon" and "Related Information". The main content area has two tabs: "Option View" (selected) and "System View". Below the tabs are buttons for "Search Parts Catalog", "Print Option List", and "Service Manual". A "How To Use The Parts Catalog" link is also visible. A "Table Filter" input field is present. The main table lists options with columns for "Option", "Repair Group", and "Group Name".

Option View

Engine Parts Information (79393426 - ISX15 CM2250)

ESN and model number at top

Parts Catalog | Dataplate | Add Upfit | CES Search | Campaigns | TRPs | Product Announcements

ReCon | Related Information

Option View | System View

The virtual service manual

Option View was selected

Service Manual

Extended training on parts catalog

How To Use The Parts Catalog

Targeted search by group name

Table Filter:

Show All entries

| Option | Repair Group | Group Name |
|-----------|--------------|---------------------------|
| BB1885 | 16.04.1 | ACCESSORY SUPPORT |
| PE1027 | 11.01.1 | AFTERTREATMENT DEVICE |
| CH1021-01 | 10.02 | AID,COO HEATER STARTING |
| CP1183 | 12.01 | AIR COMPRESSOR |
| CI1725-01 | 12.01.1 | AIR CPR INLET ARRANGEMENT |
| IC1116 | 10.01.2 | AIR INTAKE CONNECTION |
| IM1837 | 10.01 | AIR INTAKE MANIFOLD |



COMMON MISTAKES AND TOOLS TO USE

System View

System View was selected

OPTION VIEW **SYSTEM VIEW**

Expand All Collapse All Display Service Manual

To expand or collapse entire system view

Service Manual by system; You will find tools and repair procedures here.

Service Information

Manual Title: (4322250) ISX15 CM275E Service Manual

- AIR HANDLING SYSTEM
- AFTERTREATMENT
- BASE ENGINE
- COOLING SYSTEM
- ELECTRICS
- ELECTRONIC CONTROL SYSTEM
- FILTERS
- FUEL SYSTEM
- LUBRICATION SYSTEM
- OVERHAUL KITS

System Break down making it easy for search

Type in a part description here to highlight the part in the system view.

Cummins

68

PARTS PROFESSIONAL

Parts Finding

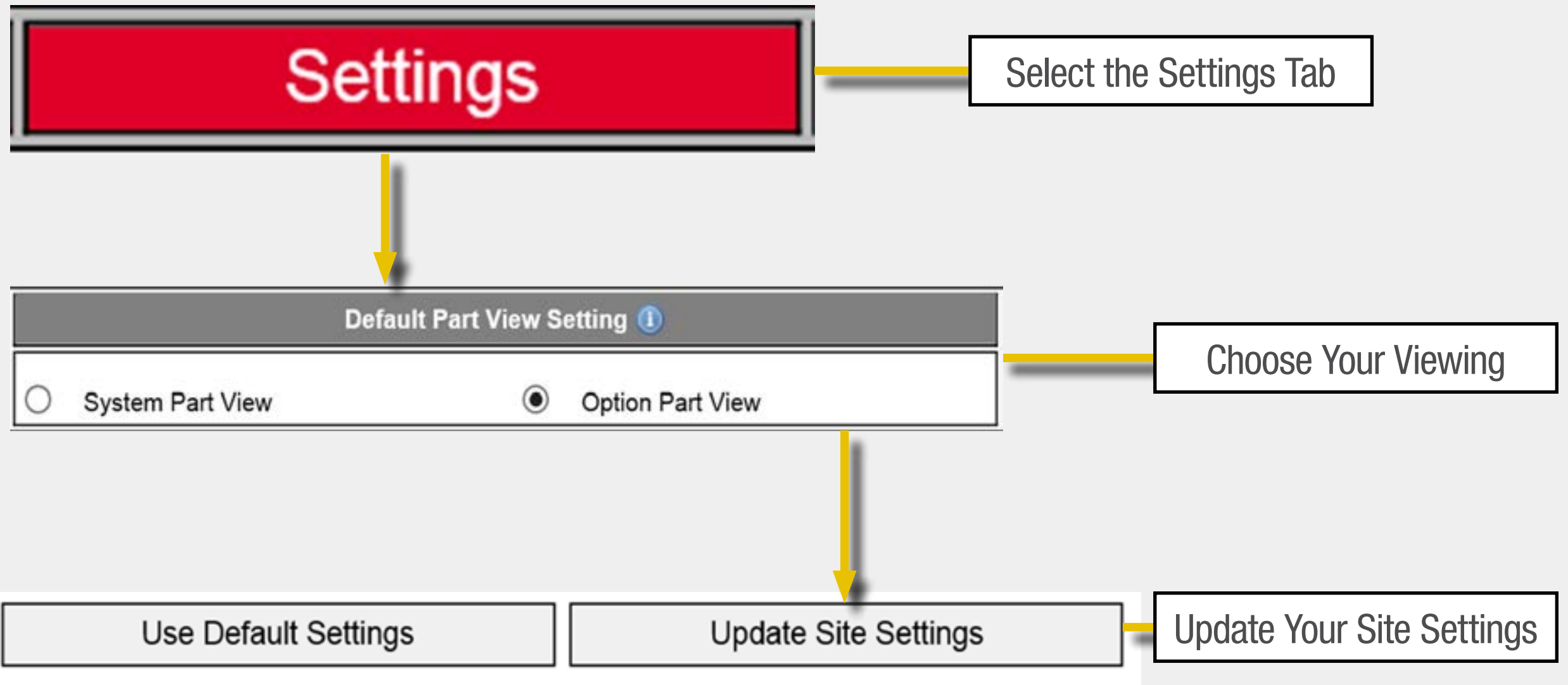


COMMON MISTAKES AND TOOLS TO USE



Tool for ...

Choosing Your Parts Catalog Default View Setting



[Click here now to change your default view](#)

COMMON MISTAKES AND TOOLS TO USE



Common Mistake Selecting Parts From an Assembly Kit

The example to the right is for a turbocharger assembly kit (2881807) with the parts that make up this kit indented to the right underneath.

Be mindful when choosing a part from an assembly kit since there are times when a customer can purchase an **individual part from the kit** and other times when they should purchase the **entire kit**. For example, when purchasing a turbocharger, the entire kit should be purchased, not just the bare part.



Select Part from Option Detail List

– Step 3

| Turbo Kit Part Number Option | | 2881807 | Kit, Turbocharger |
|------------------------------|--|---------|----------------------|
| | | 2840007 | Turbocharger |
| <input type="checkbox"/> | | 3627695 | Seal, O Ring |
| <input type="checkbox"/> | | 3678786 | Seal, O Ring |
| <input type="checkbox"/> | | 3678912 | Seal, O Ring |
| <input type="checkbox"/> | | 3684284 | Washer, Sealing |
| <input type="checkbox"/> | | 3685535 | Gasket, Turbocharger |
| <input type="checkbox"/> | | 3922794 | Seal, O Ring |
| <input type="checkbox"/> | | 3949708 | Seal, O Ring |
| <input type="checkbox"/> | | 3949781 | Seal, O Ring |
| <input type="checkbox"/> | | 3957131 | Seal, O Ring |
| <input type="checkbox"/> | | 4934278 | Washer, Sealing |
| <input type="checkbox"/> | | 4934279 | Washer, Sealing |
| <input type="checkbox"/> | | 4938639 | Gasket, Oil Drain |

COMMON MISTAKES AND TOOLS TO USE



Tool for ...
Finding Part Supersession and Part Options

Select Part from Option Detail List

– Step 3

The example to the right is the turbo part number from the previous page. The part numbers in the “Part Number” column contain superseded parts, with the last number being the newest option available.

| Part Number | Part Topic | Bulletin | Literature | Recon Equivalent |
|-------------|------------|----------|------------|--|
| *2881807 | | | | 2881807NX <input type="button" value="Add to Cart"/> |
| 2882004 | | | | 2882004NX <input type="button" value="Add to Cart"/> |
| 2882111 | | | | 2882111NX <input type="button" value="Add to Cart"/> |
| 2882111 | | | | 2882111RX <input type="button" value="Add to Cart"/> |

Part Supersession

ReCon Part Options

The numbers in the “ReCon Equivalent” column are the ReCon part options available.



68

PARTS PROFESSIONAL

Parts Finding

COMMON MISTAKES AND TOOLS TO USE



Common Mistake

Selecting the Incorrect Aftertreatment Part Number

**Select Part
from Option
Detail List**

— **Step 3**

If the aftertreatment device has not been registered within QuickServe Online, the DPF (Diesel Particulate Filter) and SCR (Selective Catalytic Reduction) will not be included in the Parts Option list. The Parts Option Detail page will display the service components that are common to the aftertreatment OPTION of the ESN entered. These common components typically are doser components, sensors and other ancillary components. You will see multiples of the same part listed, indicating that the different part options work with different engine configurations. If the part option is listed only once, then you can proceed with selecting the part number. *See the next two pages to learn how to tell the difference between registered and unregistered aftertreatment devices on QuickServe Online.*



68

PARTS PROFESSIONAL

Parts Finding

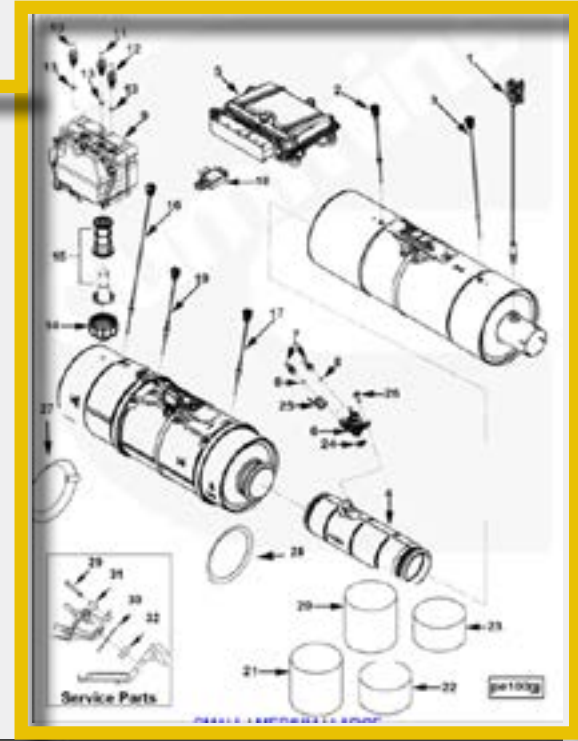
COMMON MISTAKES AND TOOLS TO USE



Registered Aftertreatment

Generic Picture

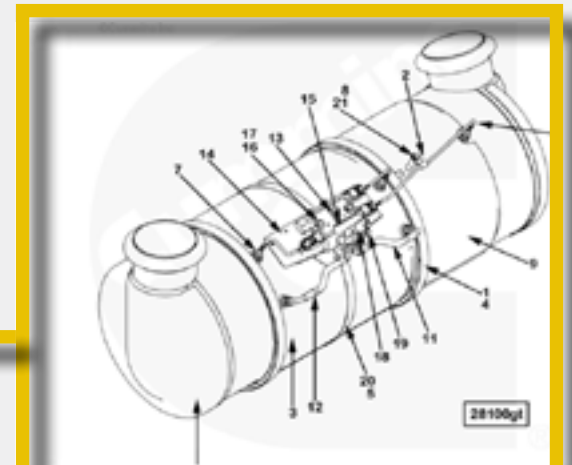
This engine's DPF (Diesel Particulate Filter) and SCR (Selective Catalytic Reduction) have been registered within QuickServe Online. This is indicated by the two clickable tabs labeled DPF and SCR with the part numbers next to them at the top of the option detail list. You must click on the buttons to find the engine specific part numbers and pictures of the device.



| Cart | | Part Description |
|------------------------------|-----------------------------|--|
| View My Cart | DPF 2880189 | SCR 2880180 |
| | | CES To Cummins Cross Reference |
| | | Aftertreatment Device |

Click the buttons to find the engine specific part numbers

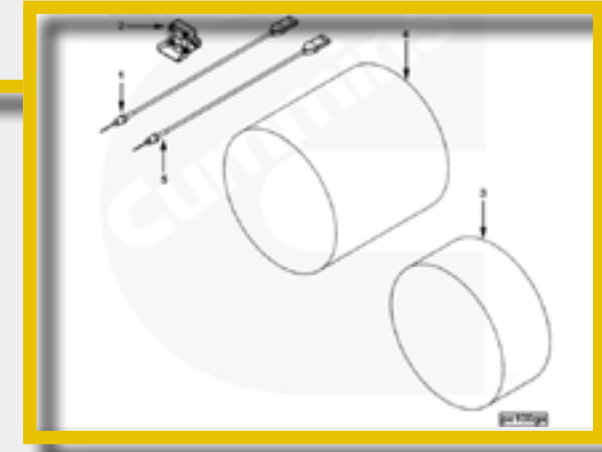
Correct Picture when DPF 2880189 is selected



COMMON MISTAKES AND TOOLS TO USE

X Un-Registered Aftertreatment

Generic Picture



This engine's aftertreatment device was not registered in QuickServe Online. There is no button indicating a specific aftertreatment device.

The parts options in this list are limited, and the DPF and SCR are not included.

| Cart | Ref No | Part Number | Part Description |
|------------------------------|--------|------------------------------------|--------------------------------|
| View My Cart | | Additional Details | CES To Cummins Cross Reference |
| | | PE1003-02 | Aftertreatment |
| | | 4926340 | Oem Installs F |
| <input type="checkbox"/> | 1 | 4902912 | Sensor, Temp |
| <input type="checkbox"/> | 2 | 4921730 | Sensor, Press |
| <input type="checkbox"/> | 3 | 4936734 | Element, Cata |
| | 4 | 4969700 | Element, Ptc |
| <input type="checkbox"/> | 5 | 4954574 | Sensor, Temp |

Additional details box rather than a DPF and/or SCR box

Example of part listed mutiple times.

| | | | |
|--------------------------|----|---------|----------------------|
| | 16 | 2872467 | Sensor, Temperature |
| <input type="checkbox"/> | 17 | 2872468 | Sensor, Temperature |
| <input type="checkbox"/> | 18 | 2871960 | Sensor, Dfn Pressure |
| <input type="checkbox"/> | 19 | 2872468 | Sensor, Temperature |



68

PARTS PROFESSIONAL

Parts Finding

COMMON MISTAKES AND TOOLS TO USE



Tool for ...

Finding the Aftertreatment Part Number

If the Aftertreatment Device is registered, you will have visibility to the engine's specific part number. If the Aftertreatment Device is not registered, you will need to follow one of the two options for finding the exact aftertreatment part number. These are listed on the next pages.



COMMON MISTAKES AND TOOLS TO USE

Option 1: Finding Unregistered Aftertreatment Part Number

Request that the customer get the part number by physically finding it on the aftertreatment device. Focus on getting the seven-digit Cummins part number. If you are given the CES (Cummins Emission Solutions) part number or the Aftertreatment serial number and not the Cummins part number, you can use the [Emissions Catalog](#) to find the Cummins part number. The image below shows where each part number is listed on the aftertreatment device.



68

PARTS PROFESSIONAL

Parts Finding

COMMON MISTAKES AND TOOLS TO USE

Option 2: Finding Unregistered Aftertreatment Part Number

Call the OEM truck dealer for the Cummins part number. Relay the trucks VIN number to locate the aftertreatment device number within their system. Again, if they give you the CES part number or the Aftertreatment serial number and not the Cummins part number, you can use the CES Emissions Catalog to find the Cummins part number. If they give you the Cummins part number, you can move forward and find the part on QuickServe Online without the CES Emissions Catalog.



68

PARTS PROFESSIONAL

Parts Finding

COMMON MISTAKES AND TOOLS TO USE



Tool for ... Emissions Catalog Mini-Tab

The following examples show how CES part numbers are typically formatted: “Q629458” and “A028Y791”. If you enter the CES part number Q629458 into the search box, it will give you the Cummins part number, which is 2871578 (See the image below).

Please enter either a Cummins Emission Solutions Aftertreatment **Serial Number** or **Part Number** to find the Cummins equivalent and link to the option details. An Engine Serial Number (ESN) may be required for the option details link to be available.

| Cummins Emission Solutions | | |
|--|--------------------------------------|---|
| Engine Aftertreatment Serial or Part Number: | <input type="text" value="Q629458"/> | <input type="button" value="Search"/> How to find your ATSN |

| Cummins Part equivalent for CES Part Number | | |
|---|---------------------|--------------------------|
| Emission Solutions Part Number | Cummins Part Number | Cummins Part Description |
| Q629458 | 2871578 | |

Cummins Part Number



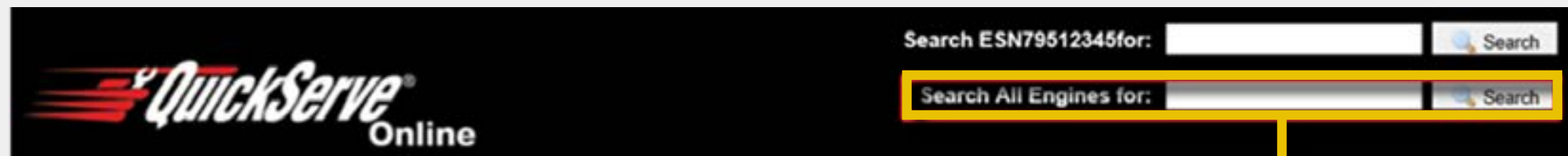
COMMON MISTAKES AND TOOLS TO USE



Tool for ...

The “Search All Engines For” Box

This search function is used for a wide range of options. Adding an asterisk (*) to the end of a part option number in the search box will broaden your search results. See the next page for an example of searching for a parts option break-down for a ReCon engine.



Search All engines

68

PARTS PROFESSIONAL

Parts Finding



COMMON MISTAKES AND TOOLS TO USE



Tool for ... ReCon Engine Parts Search

Once you enter the ESN of the ReCon engine, the parts catalog page appears. Choose an option number within the bill of materials and follow the steps on the next page.

Option Numbers

Parts Catalog Page

Engine Parts Information (60258625 - ISB CM550)

Parts Catalog CES Search Campaigns TRPs Product Announcements ReCon Related Information

| ReCon Serial Number Information | | | |
|---------------------------------|-------------|-------------|-----------|
| Serial Number | Part Number | Build Date | Ship Date |
| 60258625 | DR1581-RX | 10-AUG-2010 | |

| ReCon Engine Information | | | |
|--------------------------|--------------------------------|-------------------------|----------------|
| Part Number | DR1581RX | Fuel Rate Option | FR90665 |
| Description | ENG ISB 5.9 98 B 185@2300 VP44 | Fuel Pump Option | FP97851 |
| Family | ISB | Fuel Calibration Code | FP98640 |
| Liters | 5.9 L | Fuel Pump Type | VP44 |
| Application | AUTOMOTIVE | Fuel Type | DIESEL |
| CPL | 2687 | Fuel Solenoid Voltage | 12V |
| Aspiration | CHARGE AIR COOLED | Fuel Pump Governor Type | N/A |
| ECM Model | CM550 | Turbo Location | LMRO |
| Model Year | 2000 | Oil Pan | FRONT |
| Emission Level | EPA 98 | Air Compressor | N/A |
| Emission Certification | 2CEXH0359BAB | Vibration Damper | RUBBER |
| Configuration # | D403072BX03 | PTO Location | N/A |
| Rated HP@RPM | 185@2300 RPM | Paint Color | TITANIUM BLACK |
| Peak Torque | 420@1600 RPM | Core Part Number | DR0154800D |
| Torque Rise | 43.75% | Piston Part Number | 3946154 |

Comments

| Bill Of Materials | |
|-------------------|--------------------------------|
| Option Number | Description |
| 4018494 | 4B/6B METAL SKID |
| APECLMR | APPROVAL, AGENCY |
| BB09709 | CYLINDER BLOCK |
| BR09065 | BREATHER,CRAKCASE |
| CH09033 | COOLANT HEATER STARTING AID |
| CP09186 | COMPRESSOR (CUSTOMER SUPPLIED) |
| CP09715 | MOUNTING,AIR COMPRESSOR |
| CRC0001 | DATATAG,CRC |
| | R WARRANTY PACKAGE |

COMMON MISTAKES AND TOOLS TO USE



Tool for ...

ReCon Engine Parts Search

Select the option number for a break-down of the parts option.

| | |
|---------|-------------------------|
| VC09050 | VALVE COVER |
| WC09026 | WATER OUTLET CONNECTION |
| WP09034 | PUMP, WATER |
| WR09179 | ACCESSORIES, WIRING |

Enter the option number and **drop the zero** after “p” in this option number and add an asterisk at the end of the number.

Search

ESN60258625 for:

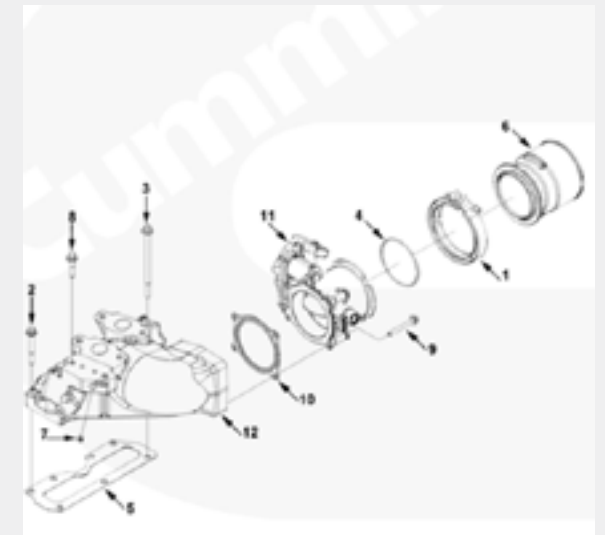
Search A

Engines for:

Select the one with a green box. This indicates there is a picture.

| Search Results | |
|----------------|---|
| | <p>PUMP, WATER</p> <p>Option: WP9034 SPC Group: 08.01 Film Card: 1 Plant Code: 40 Plant Name: DAR</p> <p>Parts Option WP9034 English Feb 8, 2005</p> |
| | <p>Water Pump</p> <p>Option: WP9034 SPC Group: 08.01 Film Card: 1 Plant Code: 99 Plant Name: CEC</p> <p>Parts Option WP9034 English May 15, 2003 </p> <p>https://quickserve.cummins.com/qs3/portal/parts/option_detail.html?path=qs3/parts</p> |

Part Number Break-down



| Cart | Ref No | Part Number | Part Description |
|---|--------|-------------|------------------------|
| <input type="button" value="View My Cart"/> | | | |
| | | WP9034 | Water Pump |
| <input type="checkbox"/> | 1 | 3941981 | Screw, Hexagon Head C |
| <input type="checkbox"/> | | 3286278 | Kit, Water Pump |
| <input type="checkbox"/> | 2 | 3906698 | Seal, Rectangular Ring |
| | 3 | 3285414 | Pump, Water |



68

PARTS PROFESSIONAL

Parts Finding

COMMON MISTAKES AND TOOLS TO USE



Tool for ...
Finding an Electrical Connector

**Use Other Tools
if Necessary**

— **Step 4**

If a customer asks for a connector but only has the sensor part number, you can still locate the electrical connector through the Electrical Connector Database. See the following page to learn how to find this tool.



COMMON MISTAKES AND TOOLS TO USE



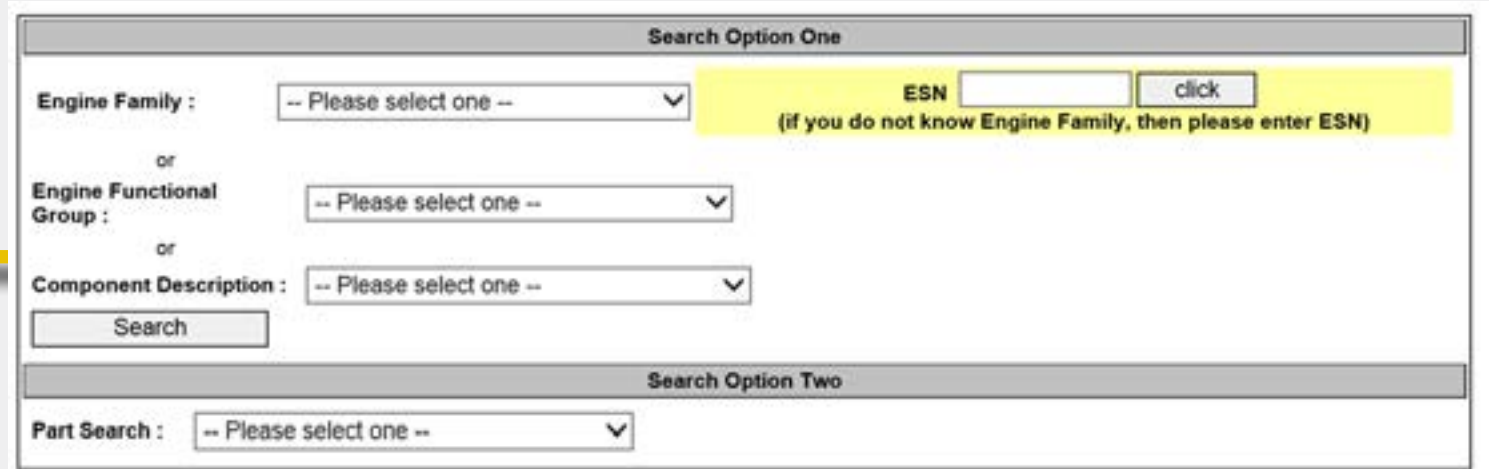
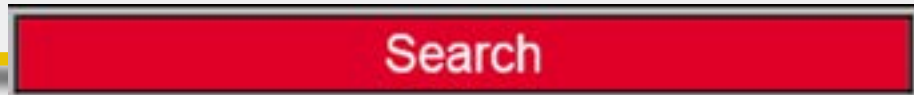
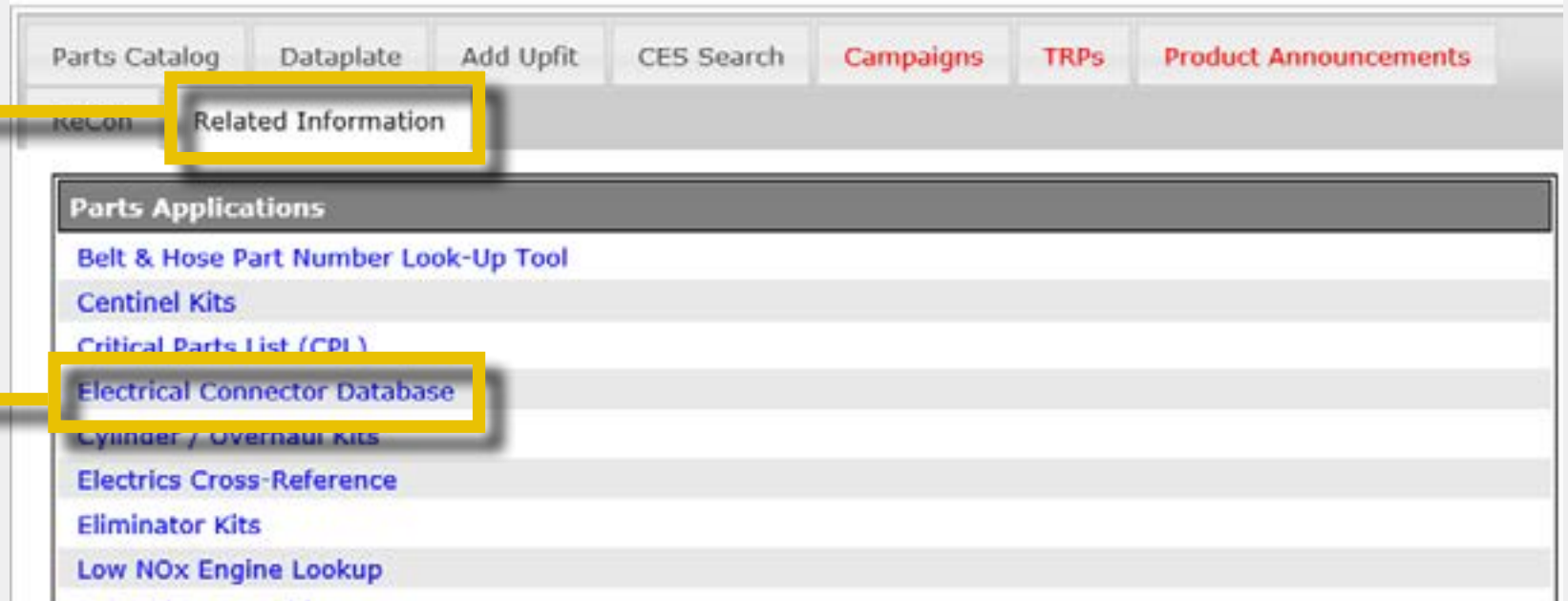
Tool for ... Finding the Electrical Connector

Select the Related Information Mini-Tab

Then select Electrical Connector Database

Select the Search Tab once you are in the electrical connector database

Begin your Search



68

PARTS PROFESSIONAL

Parts Finding

COMMON MISTAKES AND TOOLS TO USE



Tool for ...
**Access Archived SPT's
(Service Parts Topics)**

**Use Other Tools
if Necessary**

— **Step 4**

Service Parts Topics were the original TSBs (Technical Service Bulletins). These topics are located under the Service tab within the Related Information mini-tab. See the next page to learn how to navigate to the archived Service Parts Topic bulletins.



COMMON MISTAKES AND TOOLS TO USE



Tool for ... Finding the Archived Service Parts Topics

Choose Service Tab

Service

Choose Related Information

Manuals | Dataplate | Campaigns | TRPs | ATCs | Service Bulletins | TSBs | What's New
Service Tools | Maintenance | Fault Code Search | Symptom Search | Related Information

Choose Advanced Service Parts Topics

Service Documents
Archived Service Parts Topics
Cummins Emission Solutions - Service Information
Cummins OEM Account Service Support Contact List
Cummins Global DOEM Service Support Contact List

See Group Directories

SPT Group Directories

- Service_Parts_Topic_Indexes_by_Year
- 000_Complete_Engine_Group
- 001_Cylinder_Block_Group
- 002_Cylinder_Head_Group
- 003_Rocker_Levers_Group



[Use these instructions to find the STP you need](#)



68

PARTS PROFESSIONAL

Parts Finding

SUMMARY

You now know the four steps needed to find parts, how to use the additional search tools available and avoid common mistakes in the process. Please put your new skills to use as you carry out your Parts Professional role. Now, let's take a Quiz to test your knowledge.



68

PARTS PROFESSIONAL

Parts Finding

CONGRATULATIONS!

You have completed **Parts Pro 68.**

Now let's test your knowledge with a quiz.



68

PARTS PROFESSIONAL

Parts Finding

QUIZ

QUESTION 1

If an aftertreatment device is un-registered in QuickServe Online, what option/s do you have to find the part?

- (a)** Use the “search all engines” box
- (b)** call the OEM for the part number
- (c)** physically find the part number on the aftertreatment device
- (d)** Both (b) and (c)



68

PARTS PROFESSIONAL

Parts Finding

QUIZ

QUESTION 2

If an aftertreatment device is registered, you can find its specific parts by:

- (a)** Selecting the clickable button for the DPF and/or SCR at the top of the option detail list
- (b)** Selecting multiples of the same part listed in the option detail list
- (c)** Selecting the picture of the device
- (d)** Selecting the view my cart tab



68

PARTS PROFESSIONAL

Parts Finding

QUIZ

QUESTION 3

The part numbers contained in an assembly kit are listed underneath the assembly kit and are:

- (a)** Indented to the left
- (b)** Indented to the right
- (c)** Indented directly underneath
- (d)** Indented in line with the text



68

PARTS PROFESSIONAL

Parts Finding

QUIZ

QUESTION 4

You should check that your Internet Explorer browser settings are correct so that:

- (a)** you can search for parts faster
- (b)** you can find option part numbers
- (c)** you can view service tab
- (d)** you don't search within the wrong engine's bill of materials



68

PARTS PROFESSIONAL

Parts Finding

QUIZ

QUESTION 5

The Cummins part number on the aftertreatment device is:

- (a)** Alpha-numeric (both numbers and letters)
- (b)** Nine digits
- (c)** A seven digit numeric-only number
- (d)** A serial number



68

PARTS PROFESSIONAL

Parts Finding

QUIZ

QUESTION 6

When given a CES part number for the aftertreatment device, what tool do you use to find the Cummins part number?

- (a)** Emissions Catalog
- (b)** “Search all engines” for box
- (c)** Parts catalog search box



68

PARTS PROFESSIONAL

Parts Finding

QUIZ

QUESTION 7

When calling an OEM to find an aftertreatment part number, you need:

- (a)** The specific Cummins part number
- (b)** ESN
- (c)** The truck's VIN number
- (d)** None of the above



68

PARTS PROFESSIONAL

Parts Finding

QUIZ

QUESTION 8

When searching for a picture of a ReCon engine parts option break-down in the “search all engines box”, you should:

- (a)** Enter the ESN and CPL
- (b)** Enter the option number without the first “zero” and an asterisk added to the end
- (c)** Enter the part number and option number
- (d)** Enter both CPL and part number



68

PARTS PROFESSIONAL

Parts Finding

QUIZ

QUESTION 9

In which mini-tab can you find the Electrical Connector Database?

- (a)** CES search
- (b)** Parts Catalog
- (c)** Related Information
- (d)** Dataplate



68

PARTS PROFESSIONAL

Parts Finding

QUIZ

QUESTION 10

Service Parts Topics (STPs) are:

- (a)** What Technical Service Bulletins used to be called
- (b)** Located under the Service tab
- (c)** Within the Related Information mini-tab
- (d)** All of the above



68

PARTS PROFESSIONAL

Parts Finding



CONGRATULATIONS!

You have completed **Parts Pro 68.**